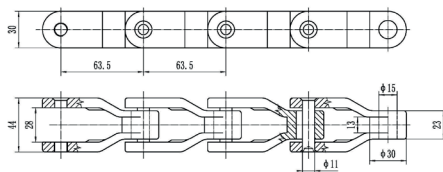
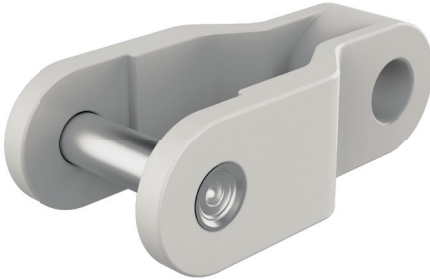
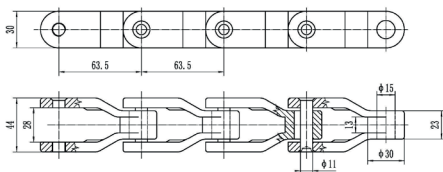


CC600 and D600 Conveyor Chains

CC600 and D600 conveyor chains are designed to meet the demands of various industrial applications, specifically tailored for the efficient movement of crates, and cartons.

Engineered with precision and built to last, these chains offer unparalleled performance in conveyor systems.



PRODUCT CODE		CHARACTERISTICS							
	Pich P (mm)	L (mm)	Diam. E (mm)	B (mm)	H (mm)	J (mm)	G (mm)	Work. Load Max N (21°C)	Weight kg/m
CC600	63.5	43	11.0	18.0	28.5	-	-	6500	4.83

PRODUCT CODE		CHARACTERISTICS							
	Pich P (mm)	L (mm)	Diam. E (mm)	B (mm)	H (mm)	J (mm)	G (mm)	Work. Load Max N (21°C)	Weight kg/m
D600	63.5	43	11.0	18.0	28.5	-	-	6000	1.44

CC600

Plates: Self-lubricating cast metal, ensuring a smooth operation with minimal maintenance.

Pins: Constructed from austenitic chrome-nickel stainless steel, the pins are work-hardened to offer high resistance to wear and tear, making them ideal for continuous and heavy-duty use.

Standard shipping lengths: Available in segments of 96 pitches, translating to 20 feet or 6.096 meters.

For more information or to place an order, please contact our sales team.

D600

Plates: Self-lubricating acetal resin, colored white to suit environments that require clean and visually appealing equipment.

Pins: Made from high-resistance, work-hardened austenitic chrome-nickel stainless steel, ensuring durability and longevity.

t: +44 (0) 161 498 4600
e: info.uk@renold.com
w: renold.com

RENOLD